

User Interface

When you run Yotta Utility, you can see the following figure (Figure-1). There are 3 topics in this section. They are as follows :

1. [Menu Bar](#)
2. [Tool Bar & Main Working Area](#)
 - [Save](#)
 - [Searching for modules](#)
 - [Stop Searching](#)
 - [Refresh COM ports & Ethernet](#)
 - [Contents](#)
 - [About Me](#)
3. [Status Bar](#)

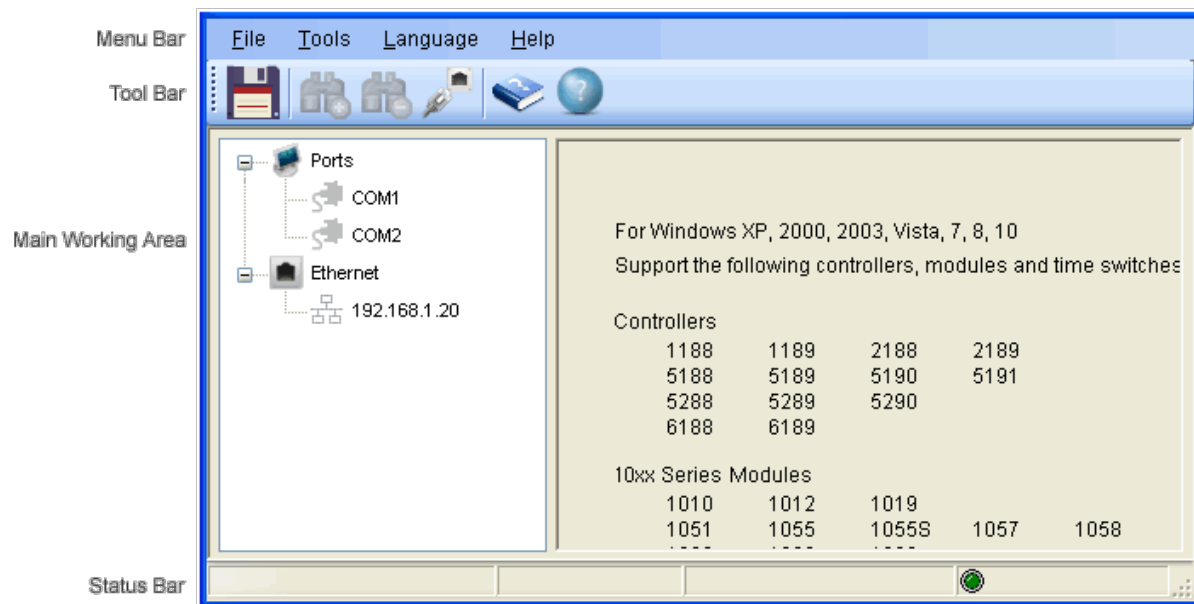


Figure-1

1. Menu Bar

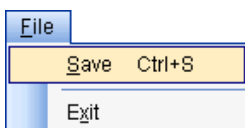


Figure-2

- When the menu **File** is dropped down, you can see Figure-2.
- Learn more about [Save](#).

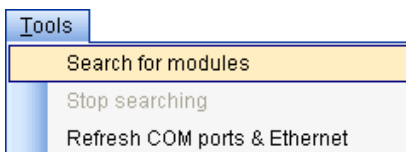


Figure-3

- When the menu **Tools** is dropped down, you can see Figure-3.
- Learn more about [Searching For Modules](#).
- Learn more about [Stop Searching](#).
- Learn more about [Refresh COM Ports & Ethernet](#).

- When the menu **Help** is dropped down, you can see Figure-4.
- Learn more about [Contents](#).
- Learn more about [About Me](#).

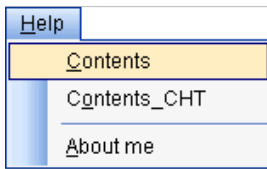


Figure-4

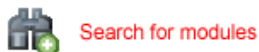
2. Tool Bar & Main Working Area



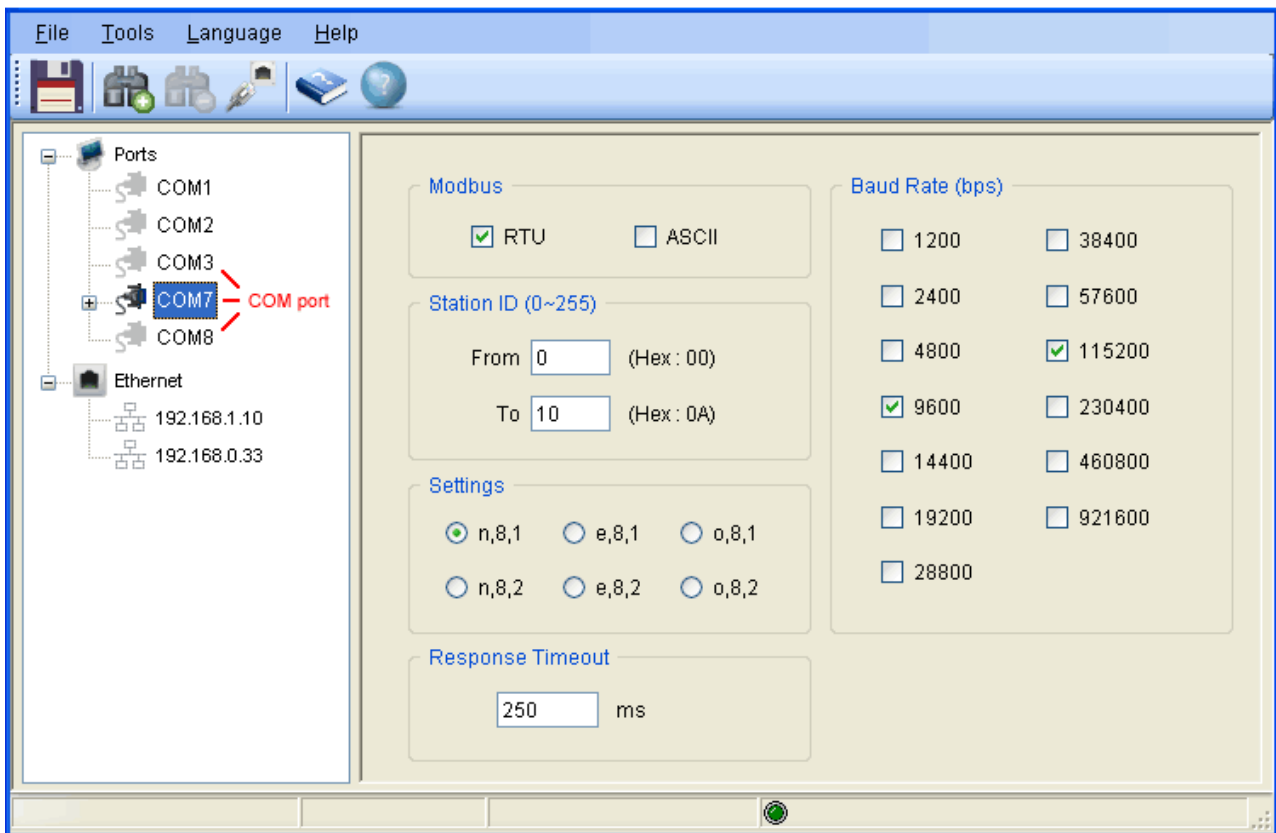
When the **Save** button is pressed, the tree-structure of the modules can be saved into a text file. The figure below shows the contents of the text file.

```

PC
  COM1
  COM2
  COM7
    (01) 1069      RTU,9600,n,8,1
    (02) 1068      ASCII,9600,n,8,1
    (03) 1057      RTU,9600,n,8,1
  COM8
    (*) 1057      RTU,9600,n,8,1
    (01) 1069      ASCII,9600,n,8,1
  
```

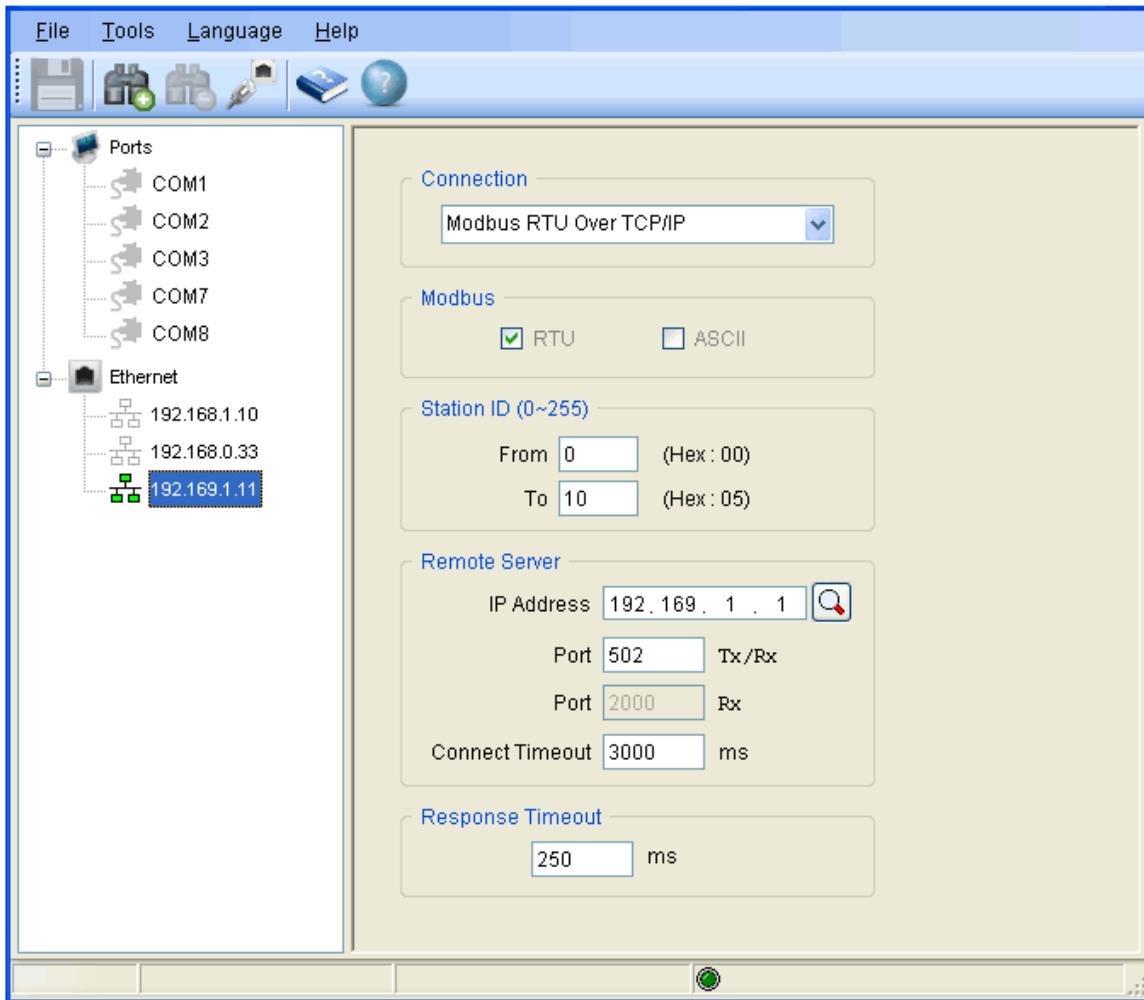


Choosing a **COM** port enables the **Searching for modules** button. On the right side of **Main Working Area**, you can make a combination of search settings. After the settings are finished, press the **Searching for modules** button to search the modules connected to the COM port.



You can also choose an **IP address** to enable the **Searching for modules** button. On the right side of **Main Working Area**, you can make a combination of search settings. After the settings are finished, press the **Searching for modules** button to search the controller whose IP is indicated in the **IP Address** text box.

Note : This search for Ethernet is only available for 12xx, 18xx modules and controllers [5288/5289/5290](#).



- When the search is proceeding, the **Stop Searching** button is enabled. Press the button to stop searching.
- **Status Bar** shows the information of the corresponding settings for searching modules.

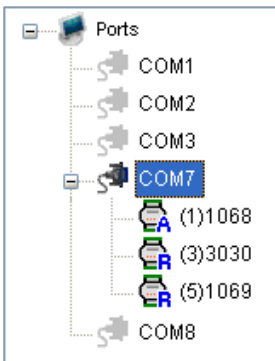
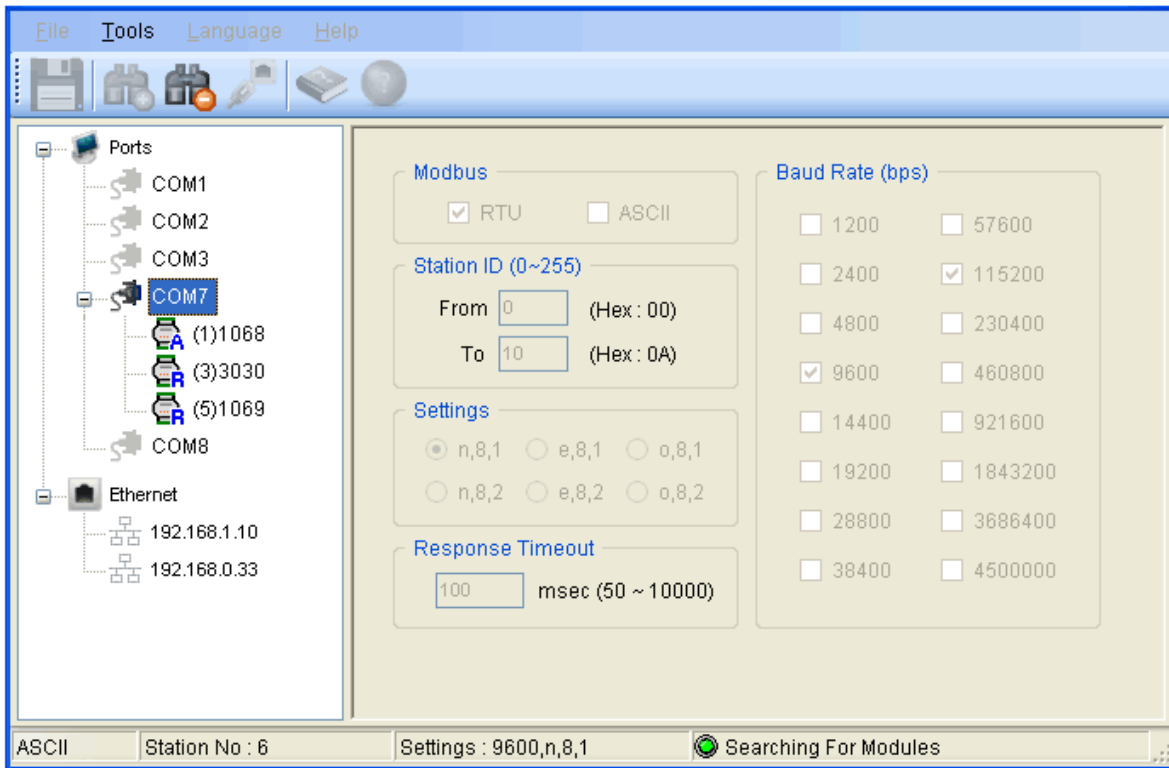


Figure-6

- When the search is finished, you can see Figure-6.
- You can [select any module](#) for more detailed information about it.
- means this module's protocol is RTU. The letter **R** turns red when the module is selected.
- means this module's protocol is ASCII. The letter **A** turns red when the module is selected.



Refresh COM Ports & Ethernet

- During the operation, COM ports can be removed from or added to the PC. You can press the **Refresh COM ports & Ethernet** button to refresh all the COM ports and Ethernet. For example, in Figure-7, we can find that COM8 is removed from the PC.
- Please refer to [Figure-6](#) to compare the differences between Figure-6 and Figure-7.

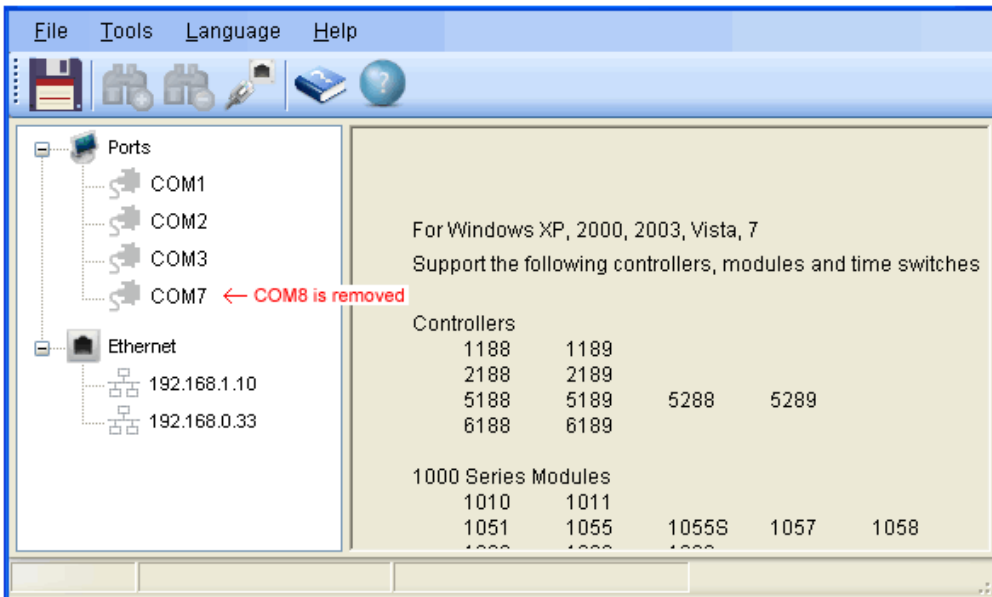


Figure-7



Contents

The button displays the on-line help.



About me

The button displays the version number of your software.

3. Status Bar

Shows the detailed information corresponding to the specific operation.