

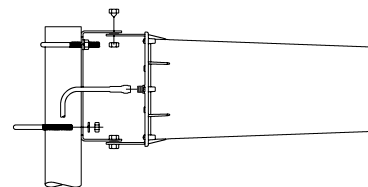
SLP-1.7:2.5-11 *Sirio Log Periodic*

Features:

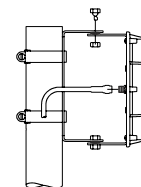
- # Base station antenna, Directional,
- # Wide-band, High-gain, no tuning required
- # for DCS 1.8, PCS 1.8, DECT, UMTS and W-LAN 2.4 systems



WIDE-BAND Directional



U-bolt (standard)



Clamp (optional)

Electrical Data	SLP-1.7:2.5-11
Type	Log Periodic Dipole array
Frequency Range	1.71 - 2.5 GHz @ SWR ≤ 2 (GSM 1.8, PCN, DECT, UMTS, W-LAN 2.4)
Impedance	50 Ω
Radiation (H-plane) Beamwidth @ -3 dB	58° frequency independent
Radiation (E-plane) Beamwidth @ -3 dB	46° frequency independent
Radiation angle deg.	0°
Front to back ratio	≥ 24 dB
Polarization	Linear Vertical
Gain	11.1 dBi
Max Power (CW) @ 30° C	50 Watts
Grounding Protection	All metal parts are DC-grounded, the inner conductor shows a DC-short
Connector	SMA-female panel

Mechanical Data	
Housing & Radome Material	Brass, Aluminium, White ABS UV stabilized
Bracket & Hardware Material	Galvanized Steel
Wind Load / Resistance	61 N @ 150 Km/h / 180 Km/h, 112 mi/h
Wind Surface	0.04 m ² , 0.43 ft ²
Dimensions (approx.)	345 x 135 x 73 mm, 13.6 x 5.3 x 2.9 in
Turning radius (approx.)	310 mm, 12.2 in
Weight (approx.)	400 gr, 088 lb
Operating Temperature	-40 °C to +80 °C
Installation type	Mast: Ø 35-42 mm, Ø 1.4-1.65 in with U-bolt; Clamp: Ø 25-70 mm, Ø 1-2.75 in (optional); Wall: with mounting screws (not included)
P/N	2130103.00

