

IP WatchDog2 Industrial

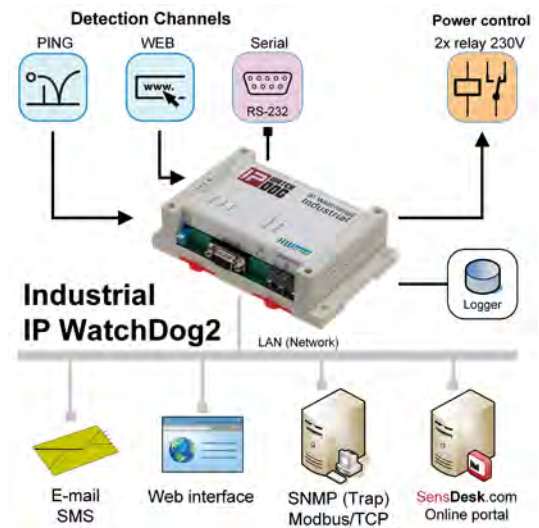
Functionality monitoring, outages detection for up to 10 LAN devices

IP WatchDog2 detects "freezing" or failure of a LAN device. It monitors it over IP (PING/WEB) or a serial port (RS-232).

When there is a failure it restarts the device without the need of an operator interaction. It can supervise up to 10 devices that it can restart or turn on a warning light.

The IP WatchDog2 periodically detects a device functionality (sends or receives an "I'm alive signal" over IP or RS-232).

The functionality detection is user configurable. New features include 8 virtual inputs, SNMP, SMS sending support and the possibility to connect to the www.SensDesk.com online portal.



Applications

- Automatically restarts a switch, router or a WiFi AP in case of communication outages.
- Signals LAN connection outages with an alarm light.
- Detects functionality of machines and devices (with RS-232) and informs its operator via email or SMS in case of a communication outage.
- Logs Internet connection outages, activates backup connection.

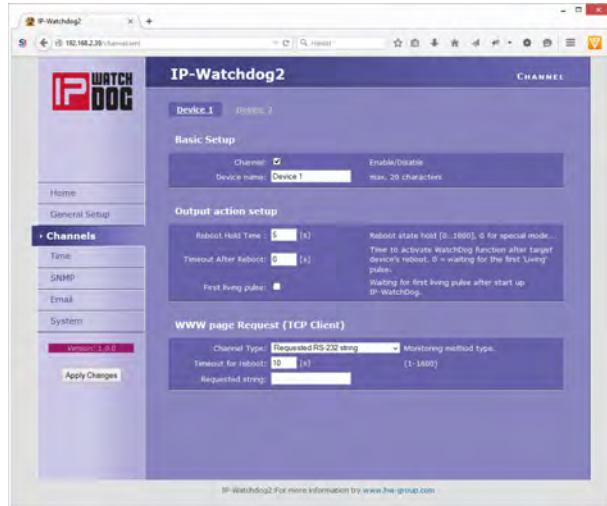
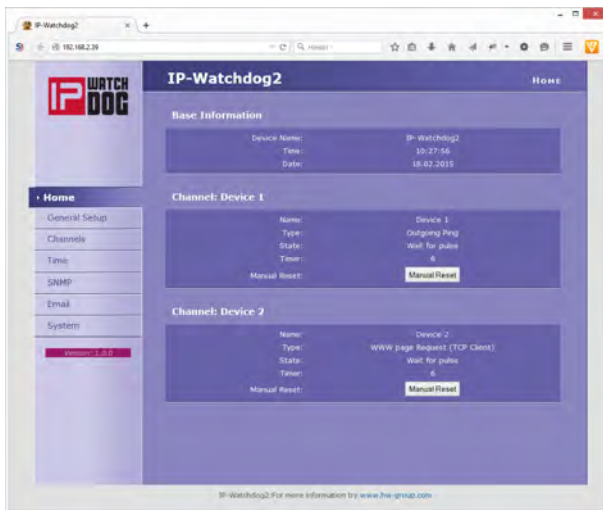
- ✓ SMS alarms
- ✓ RS-232 input
- ✓ SNMP, Modbus TCP
- ✓ Monitors functionality of up to 10 devices
- ✓ 2x 110/230V / 16A relay output
- ✓ Can be connected to SensDesk.com

Basic features

- Can detect outage of any LAN device or of an Internet connection.
- Logs any detected outages to its internal memory and notifies the operator via email or SMS.
- Restarts the "frozen" device by cutting off the power supply, without the operator's interference.
- Can be connected to an SNMP monitoring or to a SCADA system (Modbus/TCP).
- Configuration and digital outputs control options available via web interface.
- Internal acoustic output for situation of outage detection.
- Compatible services: SensDesk.com
- Supports "SMS + Ring" function, which drop calls the recipient of an alarm message.

IP WatchDog2 Industrial

Ethernet	100 Mbit/s
Functionality detection	10 LAN devices
Detection method	PING, WEB, RS-232
Relay output	2x 110/230V 16A ST
Communication	SNMP, SNMP Trap, Modbus/TCP, HWg-Push
Internal LOG	200 records
Installation	Wall / DIN rail mounting
Power input	9-30V
Dimensions	145 x 90 x 45 [mm]
Operating temperature	-30°C to +75°C



Optional accessories



HWg-SMS-GW3



PortBox2



IP Watchdog2 Lite



HWg-PDMS

HWg-SMS-GW3	A GMS gateway for sending SMS messages from HW group devices.
IP WatchDog2 Lite	WatchDog2 is designed for functionality monitoring of up to 10 LAN devices.
PortBox2	PortBox2 converts RS-232 and RS-485 ports to Ethernet.
Poseidon2 3468	A monitoring unit, allows connecting 8 1W-UNI sensors 4 DI inputs and 2x 220V/16A relay outputs.