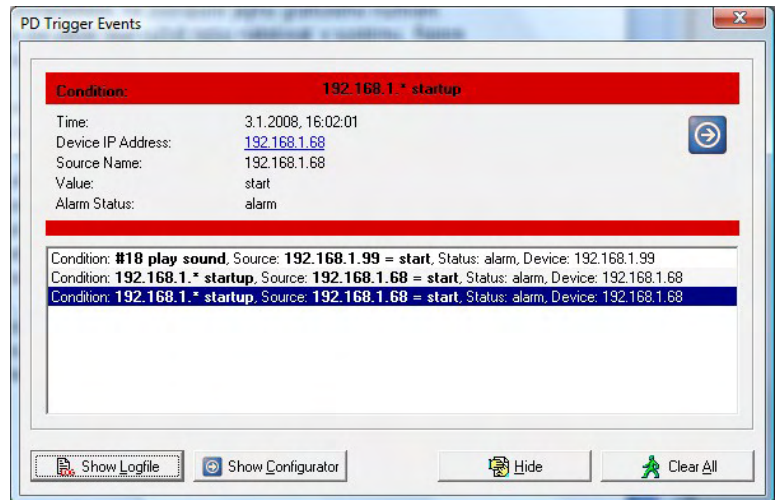


# PD Trigger

*Windows application for receiving and processing alarms in SNMP traps*

*PD Trigger is a Windows application that receives alarms from Poseidon and Damocles units, and performs simple actions such as displaying a warning message, sending a SMS, or activating an output.*

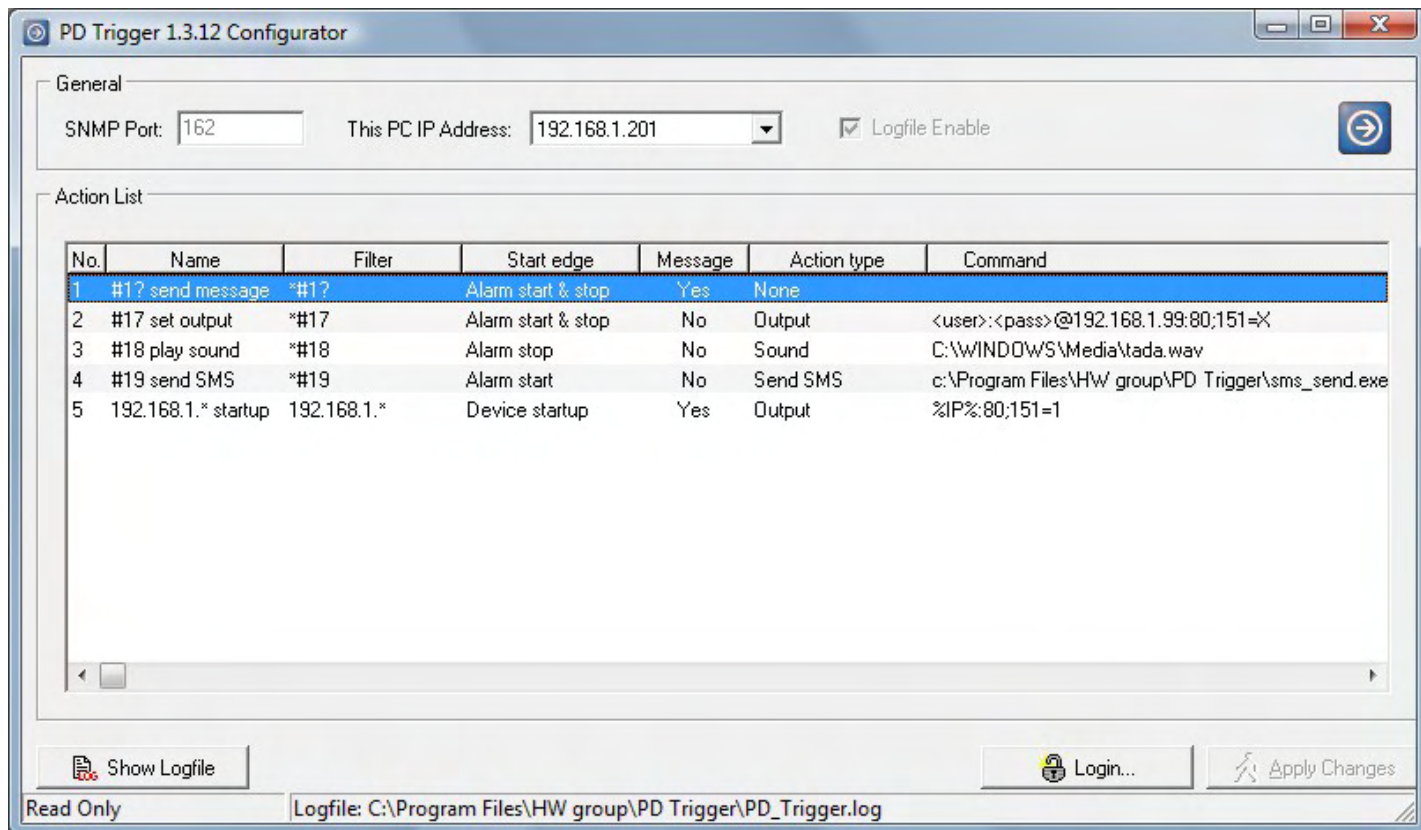
*To communicate with the units, a combination of SNMP and XML is used. PD Trigger can, to a limited extent, replace monitoring (NMS) or control (SCADA) systems.*



- A system of rules allows to configure a reaction to a precisely defined stimulus or alarm.
- Works with Poseidon and Damocles line of products (over SNMP).
- Runs as a NT service, supports Windows 2000/XP/Vista and 2000/2003 Server.
- **Various reactions to alarms:** Warning pop-ups, playing an audio file, sending a text message (SMS), activating a remote output, launching a specified NT service / GUI application.
- Password-protected configuration interface.

## Example uses of PD Trigger

- **Displaying pop-up windows** on multiple computers upon receiving an alarm.
- Forwarding alarm alerts as **SMS using a GSM modem** connected to the server.
  - Forwarding as SMS can apply to all alarm alerts, or only to urgent ones – filtered by sensor names (wildcard convention).
- **Turning off power** to non-critical equipment upon power failure at UPS input. For example, power failures can trigger the activation of an output on a Poseidon 3268 and subsequently disconnect a branch of power cabling with a PowerEgg unit.
  - Upon power failure, an application to shutdown a server can be started.
- **Playing a warning sound** when a contact is closed, button is pressed, or temperature rises.
- Starting a back-up cooling system if the equipment begins to overheat.
- **Informing security personnel** about a problem in the server room, e.g. by lighting up a warning light, whenever a problem of a specified type occurs.



### Inputs to rules

- Reacts to SNMP traps
- Reacts to alarm activation and/or deactivation
- Reacts to information about devices being started (powered up)
- Text strings (sensor names) can be searched for in the alerts and processed by the rules

### Actions

- Displaying a warning pop-up message
- Sending a text message (SMS)
- Activating a remote output (Poseidon, Damocles)
- Playing a sound
- Starting an application via service (no GUI)
- Starting a Win application (with GUI)

### System parameters

- Core runs as a NT Service
- Windows 2000/XP/Vista, 2000/2003 Server
- Configuration changes protected by password and admin access
- Log of events, received alarms, and actions

### Special functions

- Configurator simplifies working with outputs
  - Output can be inverted with respect to the input
- GSM modem configuration wizard
- Parameters (alarm source etc.) are passed to the command line when starting external utilities
- All outputs in defined states after power-up

### License

- Free version – 5 rules, noncommercial use
- Commercial version – 25 rules

Product ordering ID numbers		
600 335	PD Trigger 25R	Commercial version, supports up to 25 rules