

## M-Count 2C

### 2-CHANNEL PULSE LOGGER FOR M-BUS



#### APPLICATION

- > Collecting of impulses from gas-, water-, electricity- or other meters and field units with pulse output or electrical outputs of type S0.
- > Two completely separate pulse input channels.
- > Eight memory registers for current values (high tariff HT / low tariff NT), and historical values (dates).
- > Mounting on Industrial DIN-rail 35 mm - acc. to EN 50022 standard.

#### ORDERING CODES

620020-10 - M-Count 2C

#### TECHNICAL DESCRIPTION

##### All in one!

- ▶ Data logger to capture and transfer data of energy and water consumption and output pulses of type S0.
- ▶ Includes functions relevant date and tariff switching.

##### Flexible usage

- ▶ Mounting to standard DIN-rail according to EN 50022 standard, width of only 1 module (1-TE = 18 mm).
- ▶ Two completely separate pulse input channels.
- ▶ Eight memory registers for current values (high tariff HT / low tariff NT), and historical values (dates).
- ▶ Tariffs shifting possible even over 230 VAC via the ACTS input channel.
- ▶ Freely programmable clock cycle.
- ▶ Complete programming via PC.

##### M-Bus comply to EN 1434-3 standard

- ▶ Both pulse inputs are freely programmable and thus adaptable to different applications with Internal real time clock.
- ▶ Built-in lithium battery backup to ensure the M-bus full functionality in case of power failure.
- ▶ Optionally - complete remote meter reading with billing module.
- ▶ Easy to use configuration software for the PC is included to delivery.

##### Technical data

- ▶ Power Supply: from the M-Bus or, in case of M-Bus failure from the internal lithium battery
- ▶ Current consumption: approx. 50µA when battery operated, 1.5mA from M-Bus network
- ▶ Battery lifetime: for consumption 0.23 mAh from battery, approx. 200 days in case of M-Bus failure
- ▶ Digital inputs: double signal inputs (reed contact) (S0 optional) 50Hz sampling cycle (<30 ms for S0)
- ▶ Tariff signal: trough change-over contact to TS channel or 250VAC through ACT input
- ▶ Interfaces: M-Bus according to EN1434-3 standard, 2400 baud
- ▶ Temperature range: -20° up to +65°C
- ▶ Mounting: Industrial DIN-rail 35 mm - acc. to EN 50022 standard
- ▶ Dimensions: 1-module size (1-TE = 18 mm), 82x63x17.5 mm

##### SUBJECT OF DATA CHANGE RESPECTING THE STANDARDS WITHOUT NOTICE

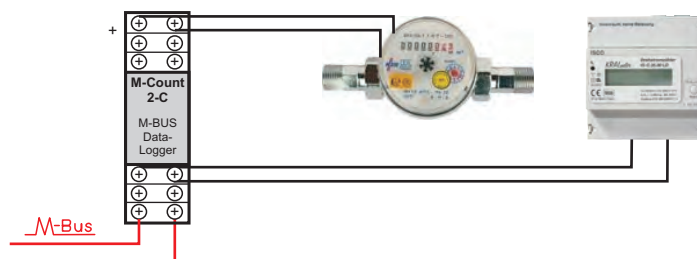
##### Accessories on special order:



- ▶ MLC-x: 10-100 relevant M-Bus Mastermodule with a serial port TCP / IP interface
- ▶ MCS-2005: Complete Collection Software and Payroll System (Ordering code 652 310)

##### Application

- ▶ Collecting of impulses from gas-, water-, electricity- or other meters and field units with pulse output or electrical outputs of type S0.



#### PREFERENCE OF USAGE

- ▶ Meets the cost-effective solution for data transmission from 2 meters equipped by potential free outputs for M-Bus interface with minimal space requirements and in addition, the tariff system of measurement.
- ▶ Built-in lithium battery backup to ensure the M-bus full functionality in case of power failure.
- ▶ Quick and easy installation.
- ▶ High accuracy measuring.
- ▶ Excellent solution for billing and precious measurements in the follow-up of local systems of distribution of electricity.



## TECHNICAL EVOLUTION