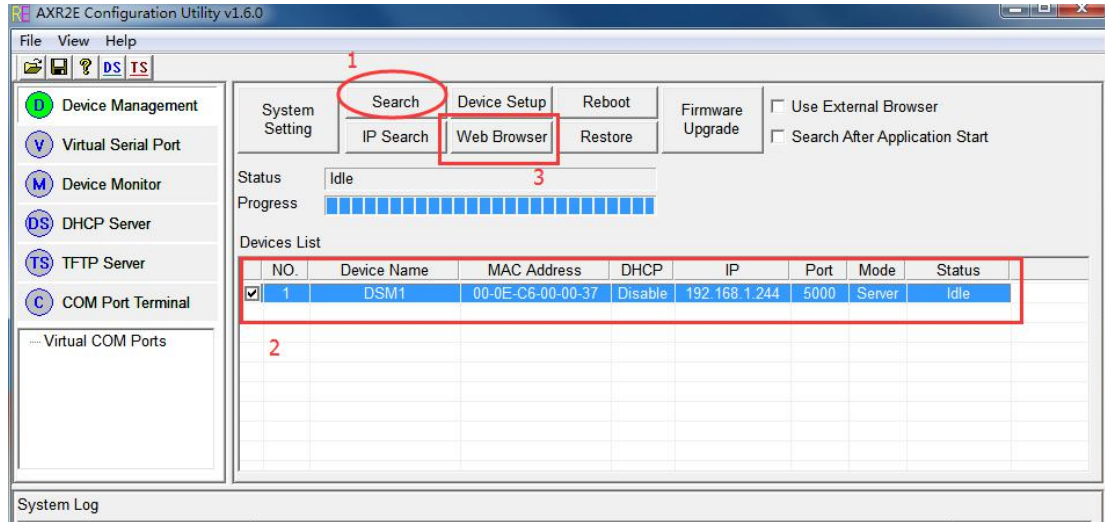
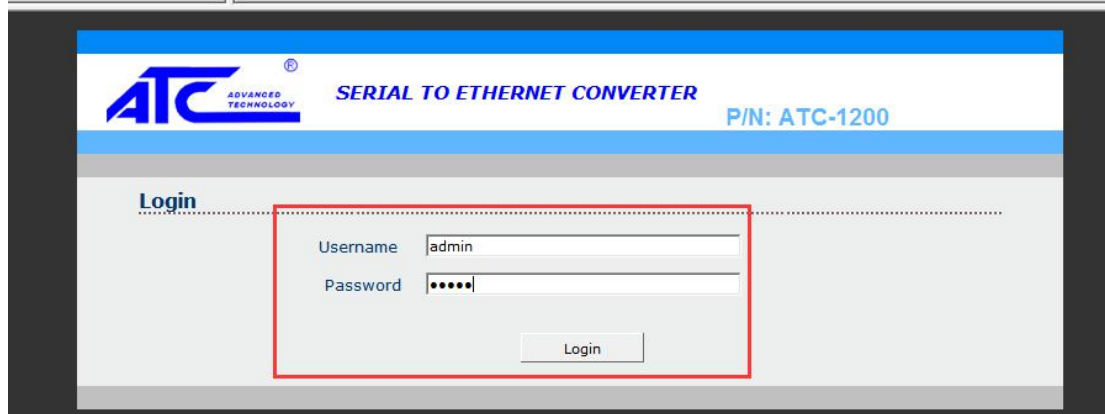
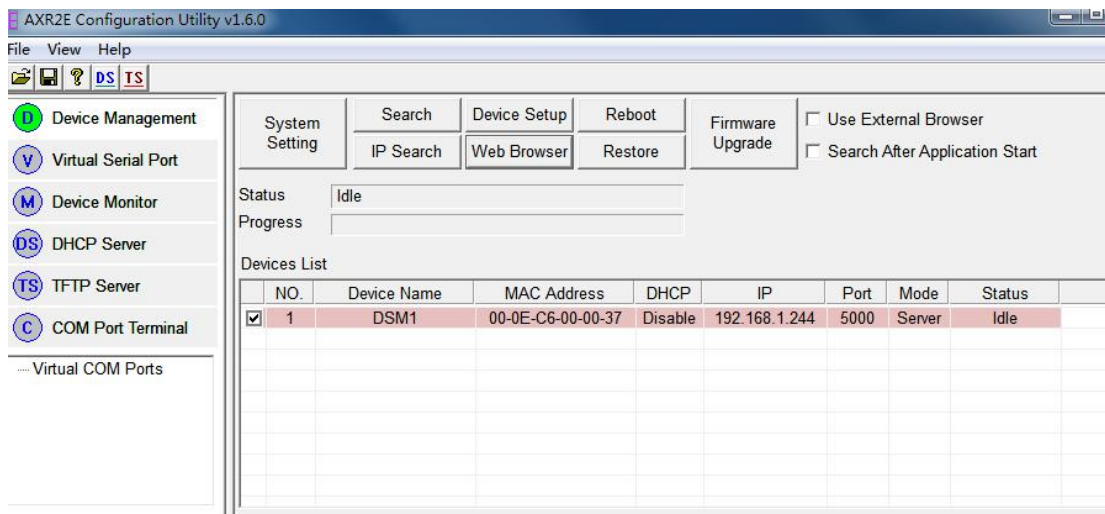


ATC-1200 Configuration Utility And Test.

1. Click Search button.



2. Click Web Browser button.



3. Log in ATC-1200 Web page.

Serial Settings

Data Baud Rate: 9600
 Data Bits: 8
 Data Parity: None
 Stop Bits: 1
 Flow Control: None
 Serial Type: RS485

Network Settings

DHCP Client: Disable
 Static IP Address: 192.168.1.244
 Static Subnet Mask: 255.255.255.0
 Static Default Gateway: 192.168.1.1
 Static DNS Server: 168.95.1.1
 Connection Type: TCP
 Transmit Timer: 30
 Server/Client Mode: Server
 Server Listening Port: 5000
 Client Destination Host Name/IP: 192.168.1.199
 Client Destination Port: 9008

Buttons: Apply, Cancel, Reboot, Restore default

4. Add Virtual Serial Port.

AXR2E Configuration Utility v1.6.0

File View Help

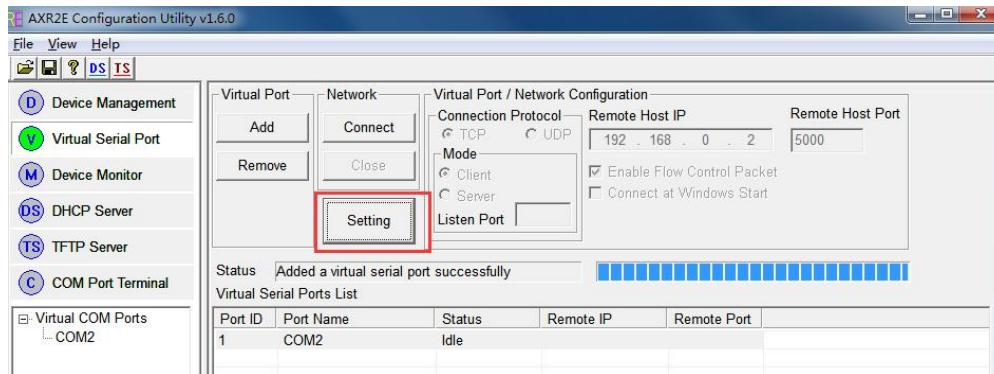
Virtual Port / Network Configuration

Connection Protocol: TCP
 Mode: Client
 Listen Port: 5000
 Remote Host IP: 192.168.0.2
 Remote Host Port: 5000

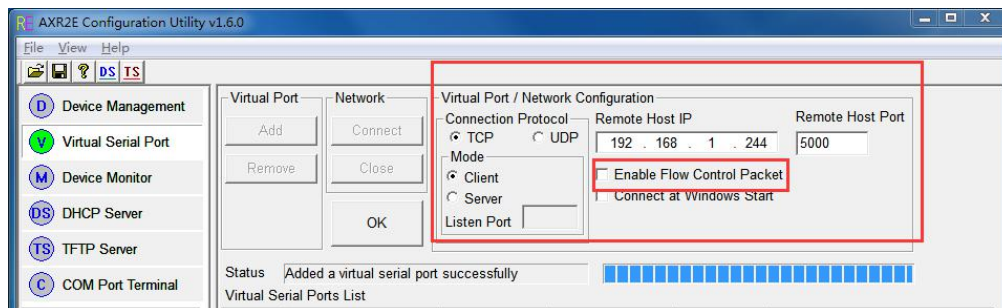
Status: Added a virtual serial port successfully

Port ID	Port Name	Status	Remote IP	Remote Port
1	COM2	Idle		

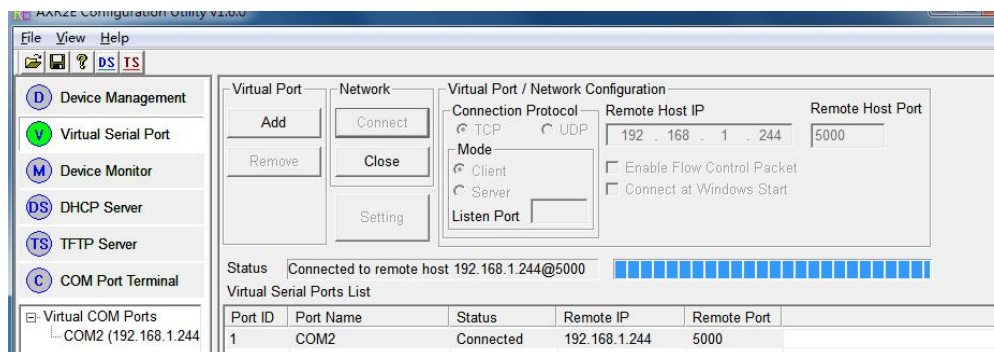
5. Click Setting button.



6. Configuration Virtual Serial Port.

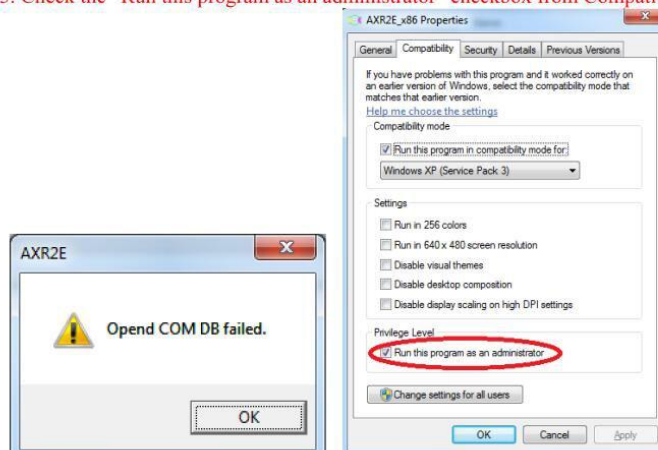


7. Then Click OK, and Click Connect button.

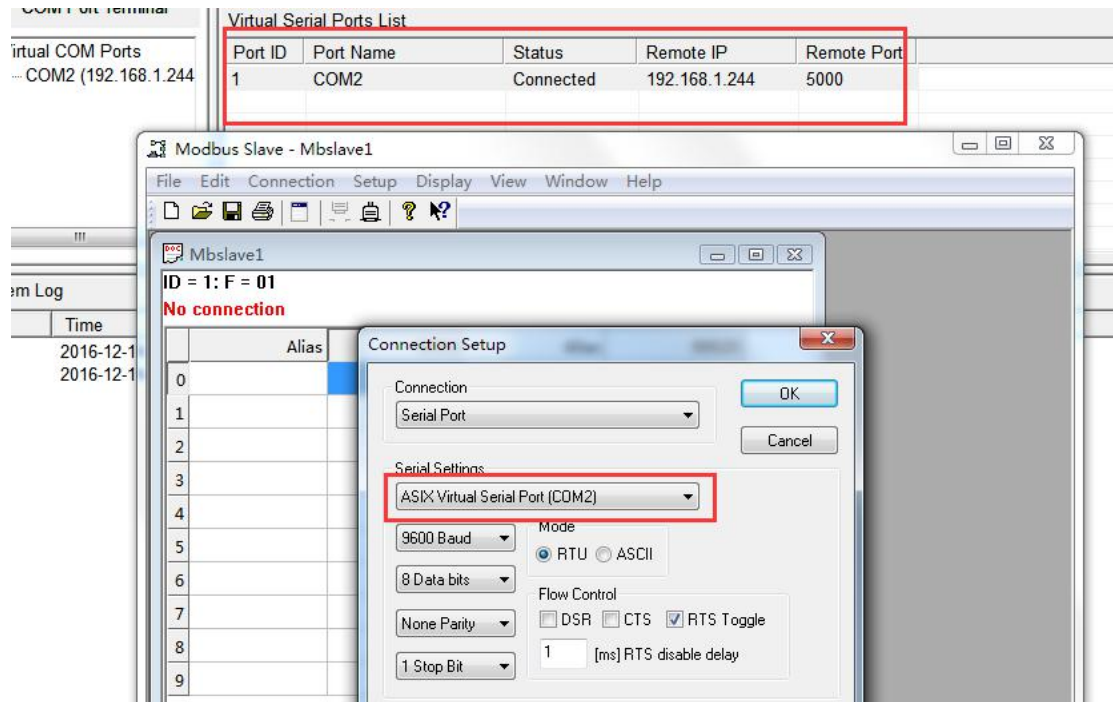


Note: When you click the [Add] button to add a Virtual Serial Port, if a warning message appears as in below figure, you need to enable the administrator authority. Below shows how:

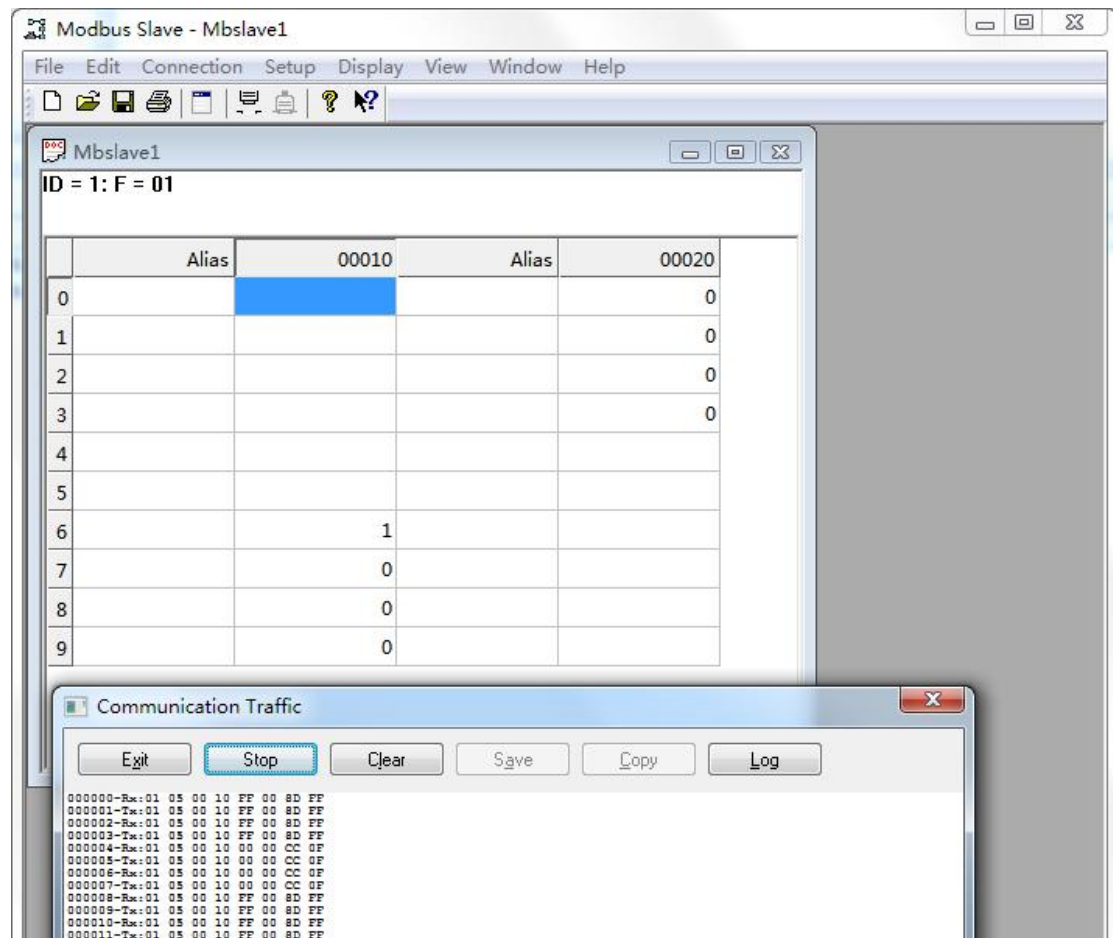
1. Select the AXR2E_x86.exe or AXR2E_x64.exe from Program File→AX110xx RS232-to-Ethernet Configuration Utility folder.
2. Right-click on the file and select Properties.
3. Check the "Run this program as an administrator" checkbox from Compatibility page.



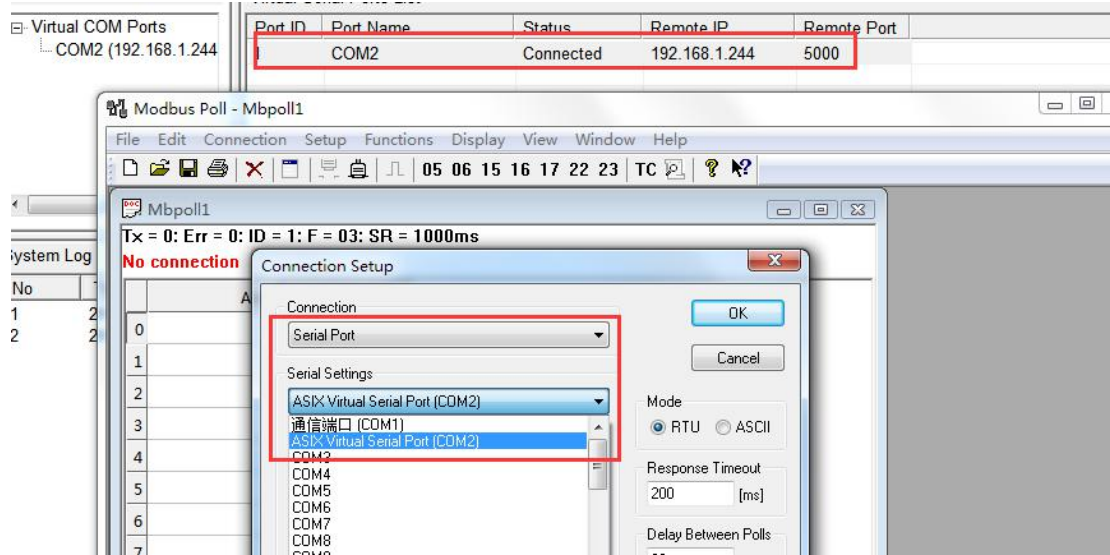
8. Use Modbus Slave test it through virtual serial port communicate with a PLC master station which using modbus RTU protocol.



9. It running well.



10. Use Modbus Poll test it through virtual serial port communicate with a I/O module slave station which using modbus RTU protocol.



11. It running well.

