

Model ATC-1200

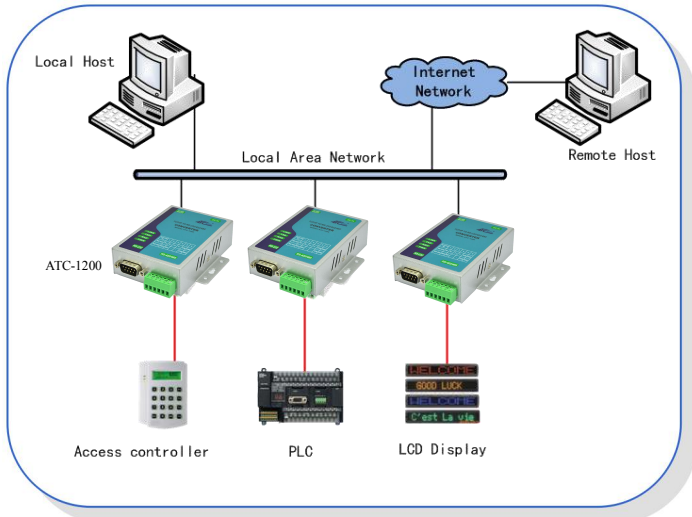
Product Features

- RS-232/422/485 3 in 1 interface
- Support 10/100Mbps Ethernet port
- Supports 4-wire and 2-wire RS-485 work mode
- Automatic data direction control on RS-485
- Supports 24VDC industrial power supply
- Terminal block easily for RS-422/485 installation
- Configure via webpage and windows utility
- Supports virtual serial port, TCP Server/Client and UDP work mode
- Built-in watchdog
- CE, RoHS and FCC Certifications



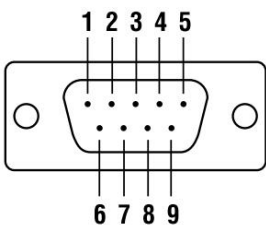
Product Description

The ATC-1200 is a cost effective and highly integrated serial to Ethernet Converter. Support 10/100Mbps Ethernet and the serial port support RTS/CTS handshake control signal. Use the software kit user can easily configure and find the device, even forget the IP address. This serial server can work very well in virtual serial mode, this is very convenient for the user's software only support COM port. ATC-1200 is an industrial-strength network-based converter can help serial device with RS232/422/485 port like CNC, PLC, weighing scale, scanner and other device access to the 10/100Mbps Ethernet network.



Pin Assignment

RS-232 DB-9(Male)



| PIN | RS-232 |
|---------|-----------|
| 2 | RXD (IN) |
| 3 | TXD (OUT) |
| 5 | GND |
| 7 | CTS (OUT) |
| 8 | RTS (IN) |
| 1/4/6/9 | NC |

RS-485/422 6-pin Terminal block

| 1 | 2 | 3 | 4 | 5 | 6 |
|-----------|-----------|----|----|---------------|-----|
| 485+ (R+) | 485- (R-) | T+ | T- | VCC (9~24VDC) | GND |

Package Checklist

- ATC-1200 serial server 1 PCS
- Documentation and software CD 1PCS
- Power adapter 9V@1A

Order Information

| | | |
|-----------|--|------------------------------------|
| ATC-1200 | One port RS-232/485/422 Serial Server | RS-232/422/485 |
| ATC-1200M | 3.3V TTL Serial Server Embedded Module | 3.3V TTL serial port (Coming soon) |

Specifications

| Serial Interface | | | |
|-------------------------------|---|---|-----------------------------|
| Interface Type | RS-232/485/422 3 in 1 (optional) | | |
| Data Rate | RS-232 | 1200 ~ 115200bps | RS-422/485 1200 ~ 921600bps |
| Data Length | 5,6,7,8 bits | | |
| Parity | Odd, Even, None | | |
| Stop Bits | 1,1.5,2 bits | | |
| Flow Control | None, Software: Xon/Xoff, Hardware: RTS/CTS | | |
| Connector | RS-232 | DB-9 male | |
| | RS-422/485 | 6-pin Terminal block | |
| Serial Line Protection | 600W for RS-232/422/485 | | |
| Network Interface | | | |
| Interface Type | Ethernet 10/100Mbps (Auto-Sensing) | | |
| Connector | 8-pin RJ-45 | | |
| Magnetic Isolation Protection | Built-in 1.5KV | | |
| System | | | |
| CPU | Embedding RISC CPU 100Mhz (100 MIPS) | | |
| Memory | 32KB SRAM.512KB Flash memory | | |
| Software | | | |
| Network Protocols | ICMP,IP,TCP,UDP,DHCP,BOOTP,Telnet,DNS,HTTP,ARP | | |
| Configure Options | Web Page,Windows Utility | | |
| OS support | Windows95/98/ME/NT/2000/XP/2003/WIN7/WIN8/XP x64/2003 x64/WIN7 x64/WIN8 x64、Linux real、TTY、UNIX | | |
| LED Indicators | | | |
| LINK | 10/100Base-TX Link & Activity Indicator | | |
| TXD | Date Transmitting from Ethernet to Serial | | |
| RXD | Date Transmitting from serial to Ethernet | | |
| PWR | Power indicator | | |
| Power Supply | 9~32VDC@1A | | |
| Physical Characteristics | | | |
| Installation | DIN-Rail Mounting | | |
| Housing | Iron (1mm) | | |
| Weight | 0.5Kg | | |
| Dimensions | Without ears | 100 × 67 × 26 mm(3.94 × 2.64 × 1.02 in) | |
| | With ears | 100 × 86 × 26 mm(3.94 × 3.39 × 1.02 in) | |
| Environmental Limits | | | |
| Operating Temperature | -25 ~ 70°C (-13 ~ 158°F) | | |
| Storage Temperature | -40 ~ 85°C (-40 ~ 185°F) | | |
| Ambient Relative Humidity | 5% to 95%(non-condensing) | | |
| Standards and Certifications | | | |
| RoHS, CE, FCC | | | |

Contact us

Shenzhen ATC Technology Co., Ltd

Room 803, Block B, Building 4, Tian'an Cyber Park, Longgang District, Shenzhen,China,518172

Tel: +86-755 - 8345 2531 / 8345 3318 Fax: +86-755-2899 8985

www.szatc.com email:sales@szatc.com

