

BGS2 Terminal



Quad-Band 2G



Compact Size



GPRS
Class 10



Flexible
Mounting



Large Input
Voltage Range



Industrial
Interfaces



TCP/IP



Low Power
Consumption



TERMINALS

Cinterion® BGS2 Terminal

Plug-and-Play with Most Flexible Mounting

Cinterion® BGS2 Terminal

Plug-and-Play with Most Flexible Mounting

The ultra-compact BGS2 Terminal incorporates the latest generation of powerful 2G wireless modules featuring a Quad-Band GSM/GPRS baseband, TCP/IP connectivity based on GPRS class 10 data transmission and outstanding low power consumption.

Ideal for first time M2M implementers and small scale deployments, the BGS2 Terminal offers reliable, cost-effective, out-of-the-box M2M communications for a variety of industrial applications such as metering, security, transportation, remote monitoring and control and many more.

The plug-and-play design includes a robust plastic housing with unparalleled mounting options, a range of common industrial interfaces such as RS-232 and RS-485 as well as an integrated SIM cardholder to enable easy deployment. Quad-Band support ensures global coverage for an all-in-one solution with data communications plus SMS and fax capabilities.

Like all Cinterion products, the BGS2 Terminal comes with full type approval (FTA) and is certified by the largest carriers worldwide.

Plug-and-Play with Most Flexible Mounting

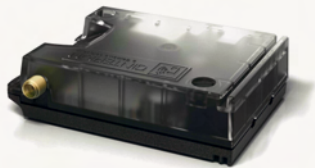
Plug & Play

BGS2 Terminal is a simple and reliable plug-and-play communication device that allows M2M entrants to quickly connect their industrial applications using wireless technology with low integration and approval efforts, saving significant time to market.

Most Flexible Mounting

Sharing the footprint of a credit card, the slim terminal fits in almost every M2M application. To ensure a simple, reliable and efficient integration the ultra-compact design incorporates a highly flexible mounting concept:

- > DIN rail mounting
- > C-rail mounting
- > Screw fixing
- > The use of cable ties



Low Power Consumption

The new M2M Terminal equipped with Cinterion's BGS2 module is based on the latest chipset generation, offering best-in-class power efficiency to extend operating time while saving battery power.

Industrial Interfaces

The robust BGS2 Terminal comes in two versions offering vertical-specific industrial interfaces, such as RS-485 used in automatic meter reading or RS-232 for general purpose applications.

Gemalto M2M Support includes:

- > Personal design-in consulting for hardware and software
- > Extensive RF test capabilities
- > GCF/PTCRB conform pretests to validate approval readiness
- > Regular training workshops



Local engineers, a competent helpdesk, a dedicated team of R&D specialists and an advanced development center are the hallmarks of our leading support offer.

Cinterion® BGS2 Terminal Features

GENERAL FEATURES

- > GSM Quad-Band:850/900/1800/1900 MHz
- > GPRS multi-slot class 10
- > Compliant to GSM phase 2/2+3GPP Release 99
- > Output power:
 - > Class 4 (2W) for GSM850
 - > Class 4 (2W) for GSM900
 - > Class 1 (1W) for GSM1800
 - > Class 1 (1W) for GSM1900
- > SIM Application Toolkit Rel.99
- > Control via AT commands [Hayes, 3GPP TS 27.007 and 27.005]
- > TCP/IP stack access via AT commands
- > Internet Services: FTP, ICMP, DNS, TCP server & client, UDP client, HTTP, SMTP, POP3, Transparent Mode
- > Supply voltage range: 8 - 30 V
- > Dimension: 80 × 55 × 23 mm (excluding connectors)
- > Operation Temperature Ranges:
 - > Normal operation: -30 °C to +85 °C
 - > Restricted operation: -40 °C to +90 °C
- > Weight 65 g
- > WEEE
- > RoHS and EuP compliant

SPECIFICATIONS

- > GPRS class 10:
 - DL: max. 85.6 kbps, UL: max. 42.8 kbps
- > Mobile Station class B
- > CSD data transmission
- > USSD support
- > SMS text and PDU mode, cell broadcast
- > Fax Group 3, class 1&2

SPECIAL FEATURES

- > Hardware watchdog
- > Firmware update via serial interface
- > Real time clock with alarm functionality
- > flexible mounting concept
- > Cable fixations

INTERFACES

- > GPRS class 10:
 - DL: max. 85.6 kbps, UL: max. 42.8 kbps
- > Mobile Station class B
- > CSD data transmission
- > USSD support
- > SMS text and PDU mode, cell broadcast
- > Fax Group 3, class 1&2

DRIVERS

- > Driver for Microsoft® Windows 7™, Windows XP™ and Windows Vista™

APPROVALS

- > CE, R&TTE, GCF, FCC, PTCRB, IC
- > Local approvals and network operator certifications

For more information, please visit

m2m.gemalto.com, www.facebook.com/gemalto, or Follow @gemaltom2m on twitter.

The information provided in this brochure contains merely general descriptions or characteristics of performance, which in case of actual use do not always apply as described or which may change as a result of further development of the products. An obligation to provide the respective characteristics shall only exist if expressly agreed in the terms of contract. All product designations may be trademarks or product names of Gemalto M2M GmbH or supplier companies whose use by third parties for their own purposes could violate the rights of the owners. Oracle and Java are registered trademarks of Oracle and/or its affiliates. Other names may be trademarks of their respective owners. ARM9 is a registered trademark of ARM Limited.

Gemalto M2M GmbH
St.-Martin-Str. 60
81541 Munich
Germany



➔ M2M.GEMALTO.COM

gemalto
security to be free